

FREMONT

# North Shore

BUILDING





FREMONT

# NorthShore

BUILDING

## BRIDGING FREMONT WITH WALLINGFORD

Once the heart of Industrial Seattle, Located in the heart of Fremont – the “Center of the Universe” – waiting for the Interurban, and now the Fremont Northshore is steps from amazing cultural amenities and outdoor spaces, including Gas Works Park and Lake Union.

The Fremont NorthShore Building is new, but it has been designed to fit into the surrounding and Fremont funkiness that makes this neighborhood so much different than its cousin to the South. Years from now we will be regarded as one of the neighborhood’s many landmarks. We appreciated that from even very early on, innovating with Weber Thompson Architects, Pennon Construction and an A list of consultants that know what they are doing in Fremont. The Fremont NorthShore Building commands respect from its peers while it stands out with vibrancy on one side, and the cool effect of being in Fremont.

Lake Union will always return you to what’s real. That’s why it’s visible from every floor, fireworks one month, summer of Duck dodge, Christmas lights another month. A natural recruiting magnet for the creative and the productive the Fremont NorthShore is what everyone wants. Take a minute and look out the window. Run up to the rooftop deck. Breathe. It’s the best place to be now, and it’s not South Lake Union.

## FEATURES & AMENITIES

TOTAL AREA:  
45,000 SF

ONSITE RESTAURANT:  
2500 SF

ROOF DECK:  
4500 SF

RESTAURANT CEILINGS:  
13 FT

CEILINGS:  
11 FT

FLOOR PLATES:  
12,000 AND 16,000 SF



# BREATHE

## INCREDIBLE VIEWS OF LAKE UNION

Best-in-Seattle rooftop deck with stunning views of Lake Union and downtown Seattle

Double height Mews – access to retail on both buildings

Rooftop deck with protected views, green roof, common areas and fire pit

Massive onstreet parking

Brightly lit exterior and trail lighting



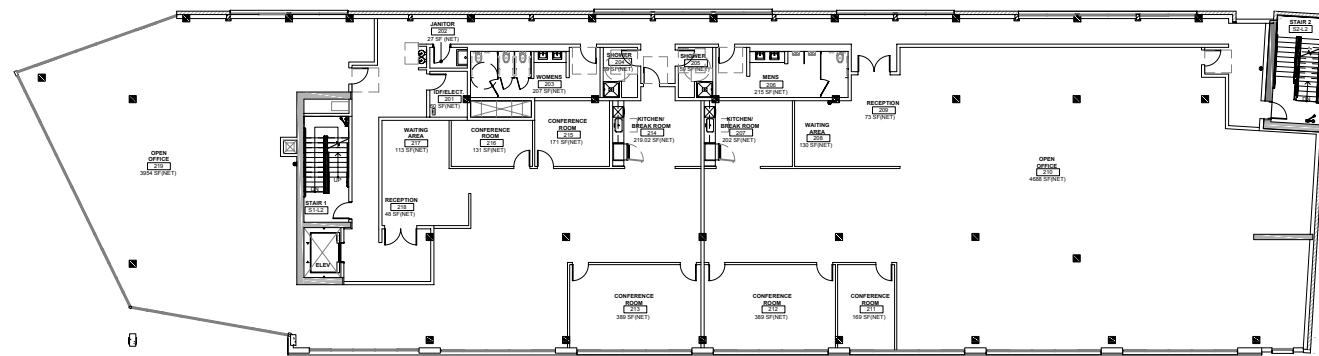


# CUSTOMIZE

A blank canvas upon which your Developer, Architect and Designer can build your brand, and configure the space to your needs. Everyone gets an office with a view, wide open floor plates for today's work environment.

LEVEL  
2

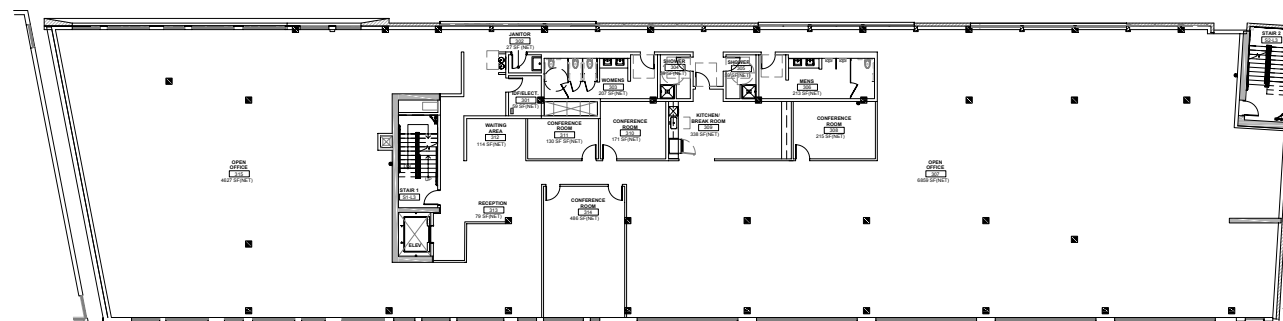
WATER VIEWS



**TENANT 1**  
5,218 USF

**TENANT 2**  
5,780 USF

LEVEL  
3



**SINGLE TENANT**  
14,294 USF

WATER VIEWS



ROOFTOP  
DECK



STREET  
LEVEL  
WITH  
COVERED  
MEWS



ABUNDANT AMENITIES & TRANSPORTATION OPTIONS



THE NEIGHBORHOOD EVERY WANTS TO BE IN

Directly adjacent to the Burke-Gilman trail, with bicyclist-friendly amenities including bike storage, showers, and lockers.

Countless nearby dining and cafe options, including Fremont Brewing Company, The Whale Wins, Stone Way Cafe, and Milstead Coffee.

RESTAURANTS

1. Royal Grinders
2. Pie
3. Chiso
4. Flying Apron
5. Jai Thai
6. Pho Than Brothers
7. Yak's Teriyaki
8. Agrodolce
9. Homegrown
10. Schilling Cider House
11. Yellow Dot Café
12. Blue Moon Burgers
13. Nickerson St Saloon
14. Fremont Brewing Co.
15. I Love Teriyaki
16. Solsticio
17. The Whale Wins

18. Joule
19. Manolin
20. RoRo BBQ + Grill
21. Sea Wolf Bakers
22. 36 Stone
23. Bar Charlie
24. Cantinetta
25. Acadia
26. Varsity Inn

FITNESS

1. Aatma Fitness
2. Anytime Fitness
3. Fremont Health Club
4. Shift
5. The Lab - Crossfit
6. FUELhouse
7. Studio Evolve
8. OmCulture

COFFEE

1. Starbucks
2. Cafe Turko
3. Milstead & Co
4. Stone Way Café
5. MiiR
6. Essential Baking Co
7. Palazzo

LIFESTYLE

1. Oohla's Hair Design
2. Fremont Library
3. Brown Hair Salon
4. Public Storage
5. Nola (Barber)
6. Divers Inst of Tech
7. Studio Jensen Hair
8. Jet City Repair
9. Hass Salon

BANKS

1. Union Bank
2. KeyBank
3. Chase Bank
4. Bank of America

SHOPPING

1. Jive Time Records
2. Dusty Strings Music
3. Urban Earth
4. Stoneway Elec Supply
5. Laughing Elephant
6. Daly's Home Decor
7. evoSeattle
8. InterConnection

TRANSPORTATION

- Bus Stops
- 99 3 min / 0.6 mi
- 5 5 min / 1.7 mi
- 8 min / 2.3 mi

North Shore







**1326 N NORTHLAKE WAY  
SEATTLE, WA 98103**

**CLEITA HARVEY**  
+1 206 607 1794  
cleita.harvey@am.jll.com

**JIM ALLISON**  
+1 206 607 1787  
jim.allison@am.jll.com

**KATHRYN POPE**  
+1 206 607 1720  
kathryn.pope@am.jll.com

FREMONT  
*North Shore*  
BUILDING



[www.jll.com/seattle](http://www.jll.com/seattle)